



NATIONAL RADIATORS
& OIL COOLER

Pune

NATIONAL RADIATORS & OIL COOLER

PUNE

CATALOG FOR INDUSTRIAL RADIATORS
AND OIL COOLERS

About us



For 40 Years National Radiators & Oil Cooler has been in the business of providing Cooling System Confidence to Automobiles, Commercial, Light Vehicle, Industrial and Agricultural segment.

Our great success over competitors is in large due to our wealth of knowledge.

We have high range variety radiators with quantity in below segment

- Car, Industrial, Agricultural, Earthmoving, Machinery, Excavator, Railways, etc**

We are dealing in Light Motor Vehicle Radiators, Condensers, Radiator Fan Assembly and Condenser Fan Assembly. We also deal in Heavy Copper make Oil Cooler's, Aluminium Make Oil Cooler's and Heat Exchanger's.

We can design and Compare the Radiators and Oil Coolers in any size or form to meet our customers requirements in timely manner.

We are supplying highly satisfactory products, Warranty system and customer Service System.

OUR SERVICES



NATIONAL RADIATORS
& OIL COOLER
Pune

- **Semi-Manufacturers.**
- **Wholesaler for below segment :-
Car Segment, Commercial, Industrial,
Excavators, Gensets, Railway segment, etc.**
- **Site Work Service available for all over India.**
- **Specialised in customising and designing
Radiators and Oil Coolers as per customers
needs.**
- **Well equipped and advanced workshop for
excellent service and optimum results.**



NATIONAL RADIATORS
& OIL COOLER

Pune

INDUSTRIAL RADIATORS

PAGE 5-21

TATA RADIATORS



JD 315

HEIGHT - 635 mm

WIDTH - 560 mm

THICKNESS - 5 ROW

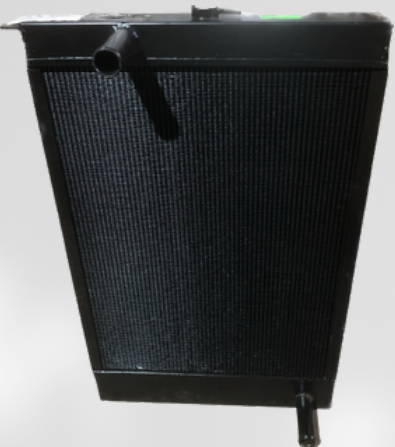


TATA EX 70

HEIGHT - 745 mm

WIDTH - 470 mm

THICKNESS - 90 mm



TATA EX 110

HEIGHT - 860 mm

WIDTH - 560 mm

THICKNESS - 90 mm

TATA RADIATORS



TATA EX 200

HEIGHT - 919 mm
WIDTH - 650 mm
THICKNESS - 115 mm



TATA EX 200 CUMMINS MODEL

HEIGHT - 1010 mm
WIDTH - 650 mm
THICKNESS - 5 ROW



TATA EX 210

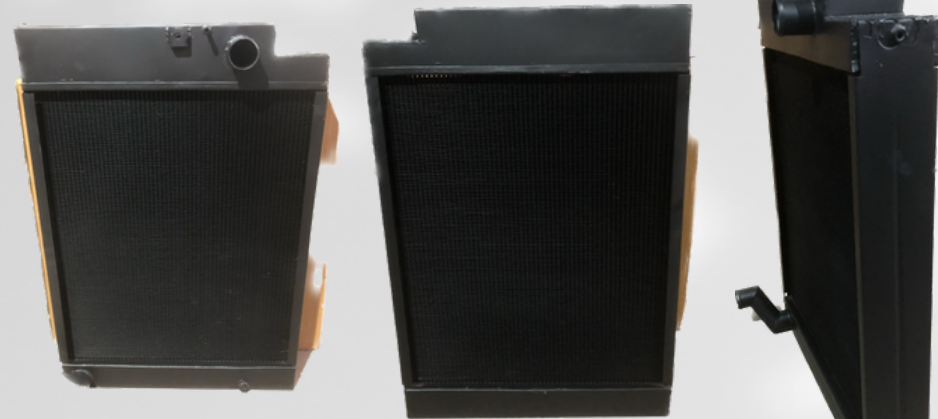
HEIGHT - 1150 mm
WIDTH - 765 mm
THICKNESS - 170 mm

L&T RADIATORS



L&T PC 71 COMBI COOLER

HEIGHT - 760 mm
WIDTH - 610 mm
THICKNESS - 120 mm



PC 71 (Copper)

HEIGHT - 800 mm
WIDTH - 545 mm
THICKNESS - 115 mm



L&T 770

HEIGHT - 760 mm
WIDTH - 595 mm
THICKNESS - 100 mm

L&T RADIATORS



PC 150 (Back Mounting)

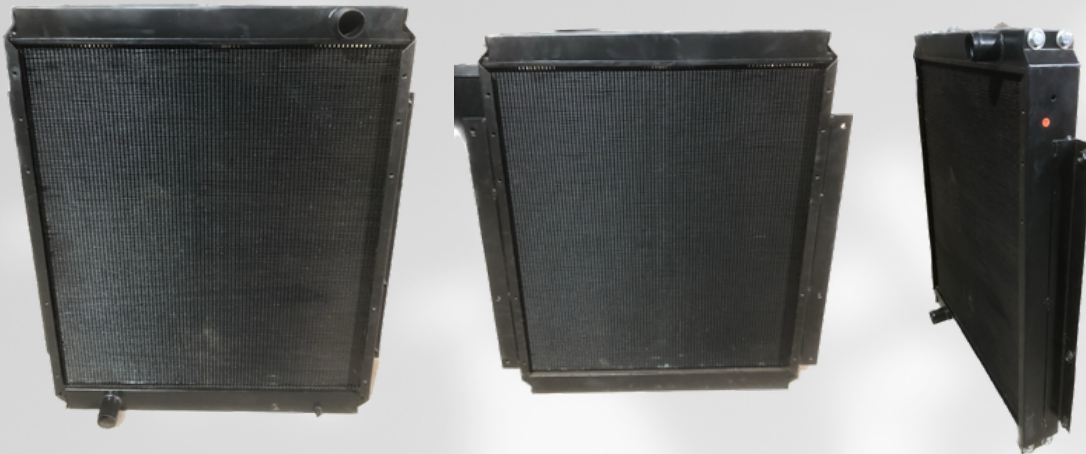
HEIGHT - 990 mm
WIDTH - 220 mm
THICKNESS - 100 mm

PC 150 (Top Mounting)

HEIGHT - 990 mm
WIDTH - 220 mm
THICKNESS - 100 mm

PC 210

HEIGHT - 1110 mm
WIDTH - 320 mm
THICKNESS - 100 mm

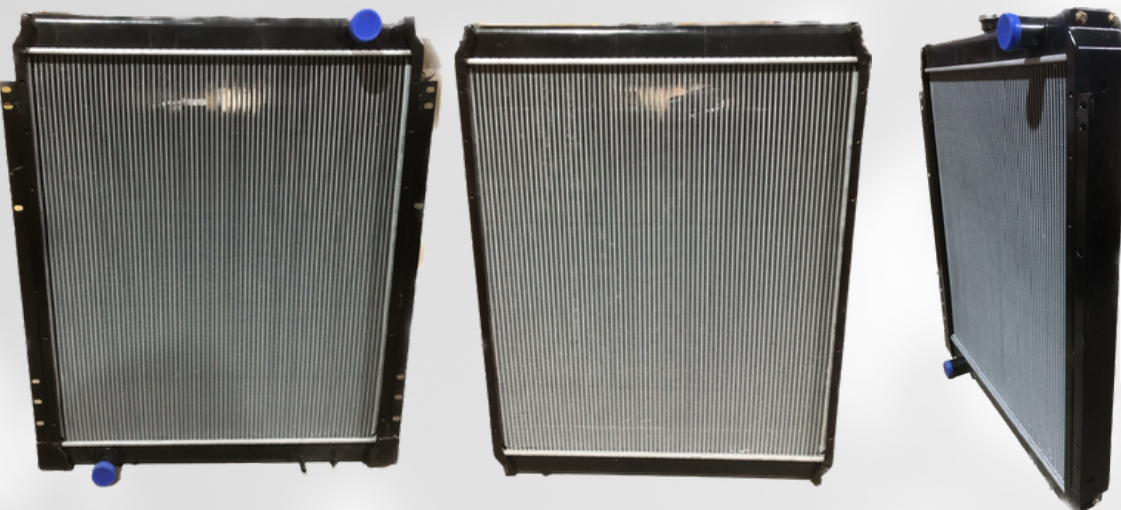


PC 200 Komatsu (Copper)

HEIGHT - 970 mm

WIDTH - 865 mm

THICKNESS - 105 mm



PC 200 Komatsu (Aluminium)

HEIGHT - 980 mm

WIDTH - 865 mm

THICKNESS - 100 mm

HYUNDAI RADIATORS



HYUNDAI 80

HEIGHT - 730 mm

WIDTH - 605 mm

THICKNESS - 80 mm



HYUNDAI 140

HEIGHT - 895 mm

WIDTH - 325 mm

THICKNESS - 130 mm

HYUNDAI RADIATORS



Hyundai 210

HEIGHT - 1100 mm

WIDTH - 770 mm

THICKNESS - 120 mm



Hyundai 340

HEIGHT - 1180 mm

WIDTH - 850 mm

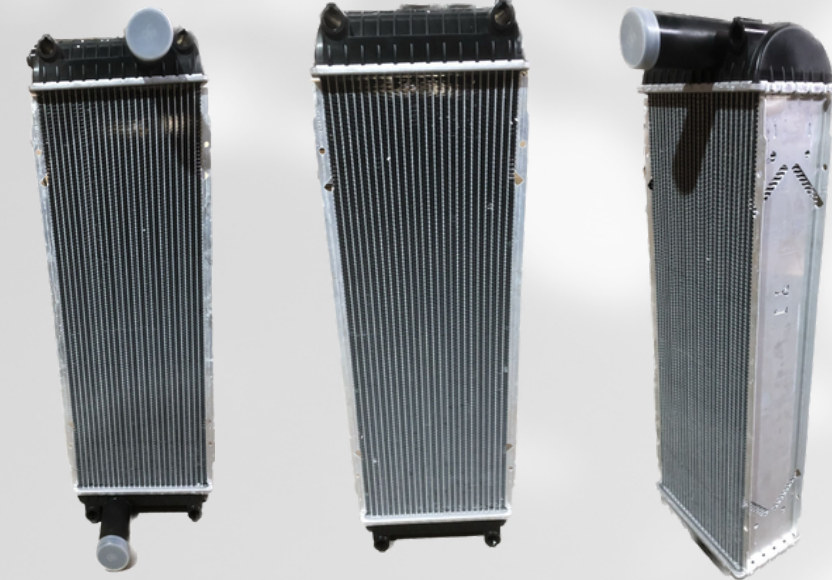
THICKNESS - 130 mm

VOLVO RADIATORS



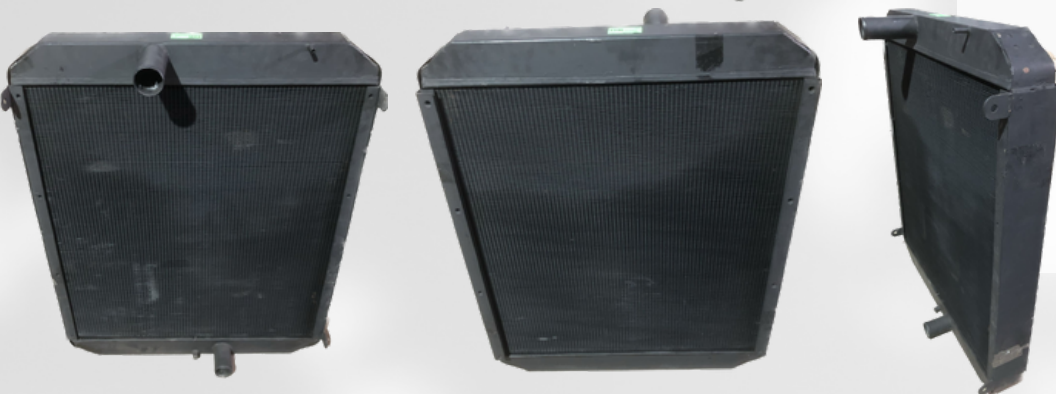
Volvo Prime

HEIGHT - 880 mm
WIDTH - 305 mm
THICKNESS - 150 mm



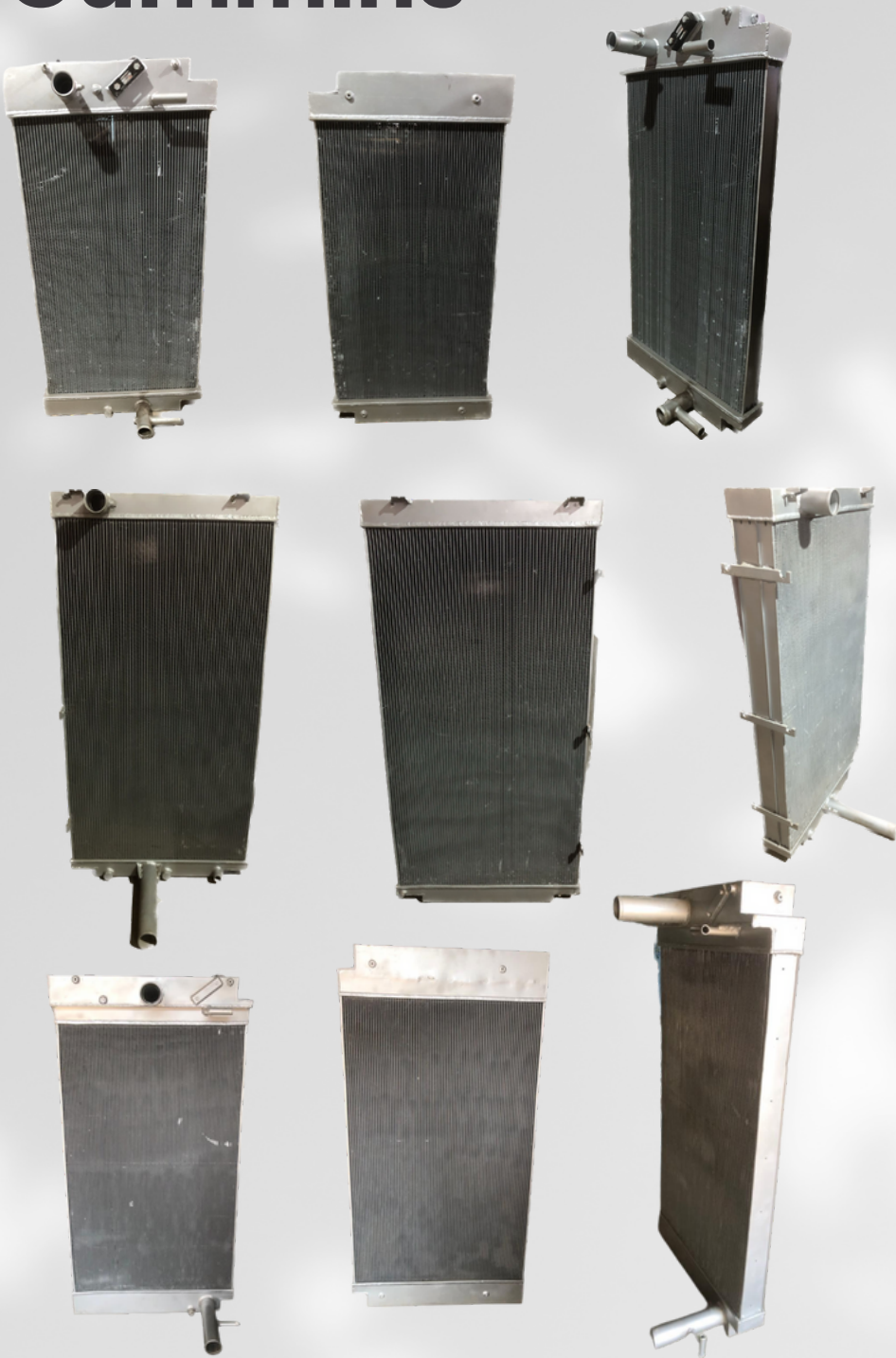
Volvo 210 PRIME D

HEIGHT - 880 mm
WIDTH - 280 mm
THICKNESS - 120 mm



Volvo 140

HEIGHT - 925 mm
WIDTH - 730 mm
THICKNESS - 110 mm



Cummins 250 K.V

HEIGHT - 1325 mm
WIDTH - 630 mm
THICKNESS - 75 mm

Cummins 400 K.V

HEIGHT - 1400 mm
WIDTH - 690 mm
THICKNESS - 125 mm

Cummins 500 K.V

HEIGHT - 1630 mm
WIDTH - 815 mm
THICKNESS - 100 mm

ELGI RADIATOR



NATIONAL RADIATORS
& OIL COOLER

Pune



ELGI 1100/300

HEIGHT - 1580 mm

WIDTH - 1480 mm

THICKNESS - 190 mm



JCB RADIATORS



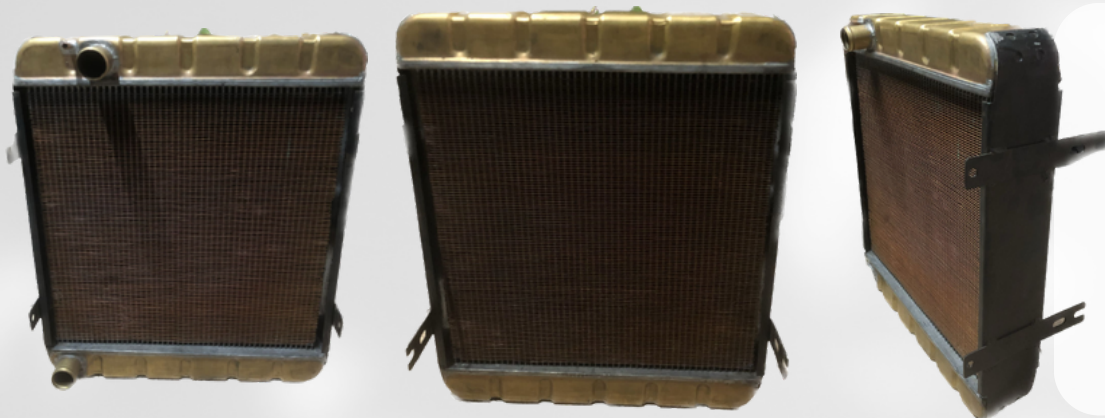
JCB 2000 MODEL

HEIGHT - 490 mm
WIDTH - 535 mm
THICKNESS - 2 Row



JCB 3DX

HEIGHT - 490 mm
WIDTH - 535 mm
THICKNESS - 2 Row



JCB 3D Old Model

HEIGHT - 560 mm
WIDTH - 470 mm
THICKNESS - 100 mm

JCB RADIATORS



JCB 3DX MADRAS

HEIGHT - 650 mm
WIDTH - 620 mm
THICKNESS - 80 mm



JCB ENGINE MADRAS

HEIGHT - 645 mm
WIDTH - 620 mm
THICKNESS - 80



JCB 4DX MADRAS

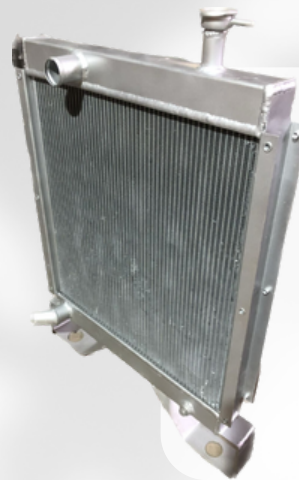
HEIGHT - 660 mm
WIDTH - 620 mm
THICKNESS - 80 mm

CRANE



NATIONAL RADIATORS
& OIL COOLER

Pune



Farana Crane

HEIGHT - 800 mm

WIDTH - 590 mm

THICKNESS - 80 mm



Farana Crane (Copper)

HEIGHT - 715 mm

WIDTH - 675 mm

THICKNESS - 100 mm

Forklift



NATIONAL RADIATORS
& OIL COOLER

Pune



GOODREJ FORKLIFT 3 TON

HEIGHT - 615 mm

WIDTH - 530 mm

THICKNESS - 80 mm



VOLTAS FORKLIFT

HEIGHT - 580 mm

WIDTH - 465 mm

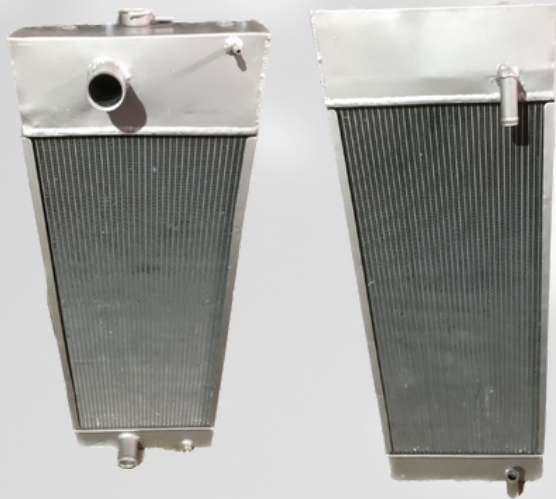
THICKNESS - 75 mm

Sany Radiators



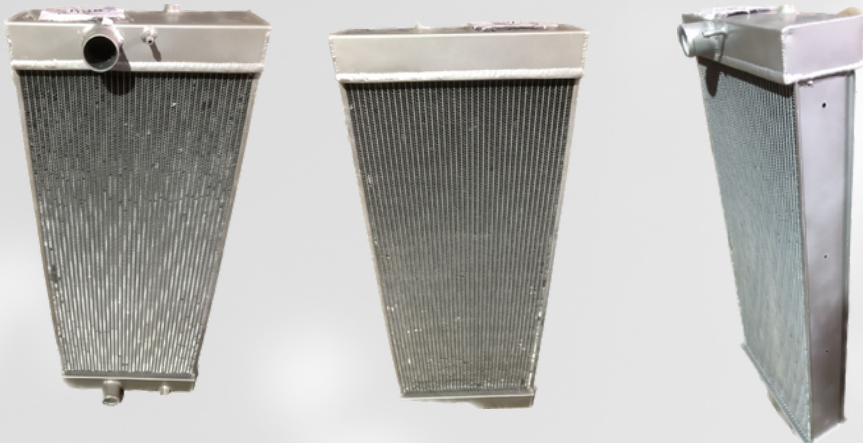
Sany Cummins Copper

HEIGHT - 1015 mm
WIDTH - 380 mm
THICKNESS - 110 mm



Sany 210 IMPORT MODEL

HEIGHT - 1010 mm
WIDTH - 365 mm
THICKNESS - 115 mm



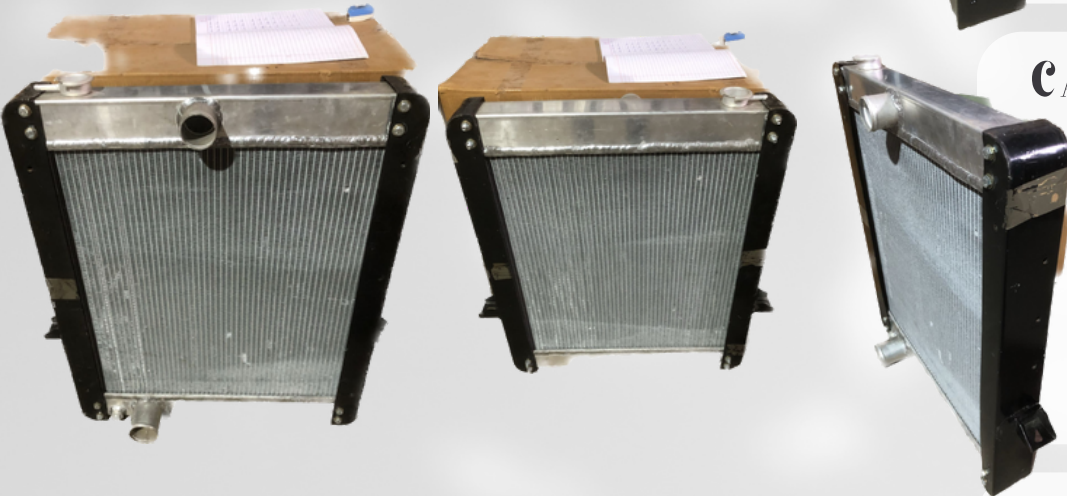
Sany 210 CUMMINS MODEL

HEIGHT - 1010 mm
WIDTH - 395 mm
THICKNESS - 100 mm



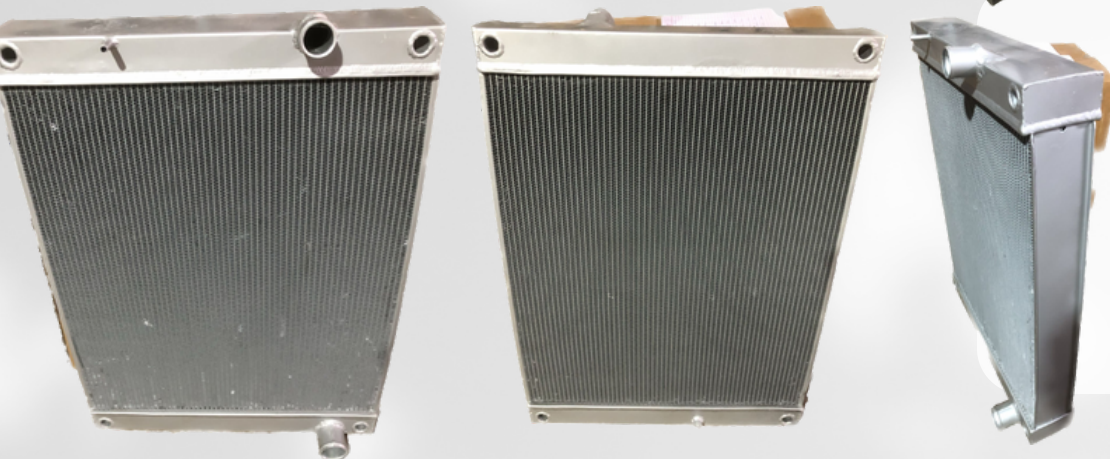
Terex

HEIGHT - 730 mm
WIDTH - 525 mm
THICKNESS - 105 mm



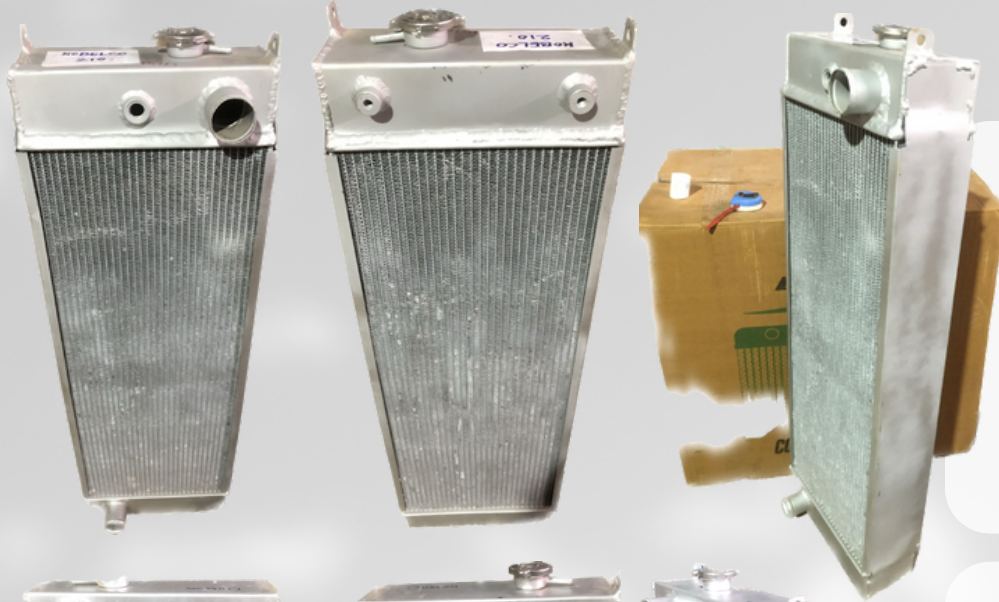
CATTERPILLER CAT (Aluminium)

HEIGHT - 705 mm
WIDTH - 600 mm
THICKNESS - 90 mm



Harvester

HEIGHT - 845 mm
WIDTH - 635 mm
THICKNESS - 100 mm



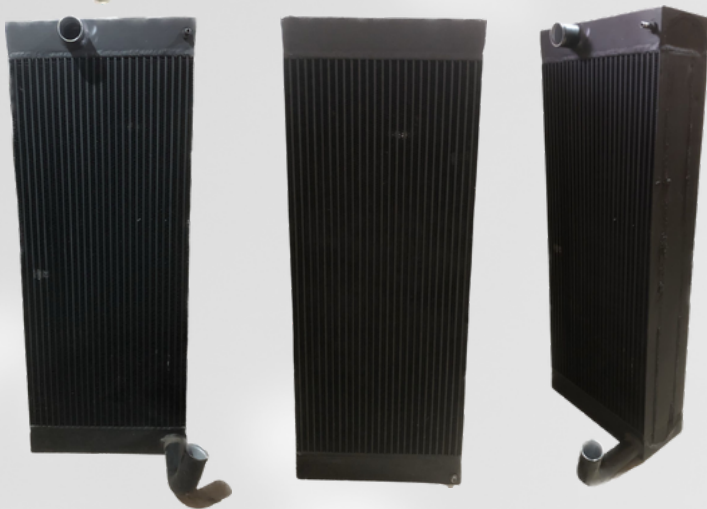
Kobelco 210

HEIGHT - 990 mm
WIDTH - 320 mm
THICKNESS - 125 mm



DUSSAN

HEIGHT - 1145 mm
WIDTH - 345 mm
THICKNESS - 100 mm



VITGAN

HEIGHT - 1040 mm
WIDTH - 400 mm
THICKNESS - 160 mm



NATIONAL RADIATORS
& OIL COOLER

Pune

INDUSTRIAL OIL COOLERS

PAGE 23-32

TATA OIL COOLERS



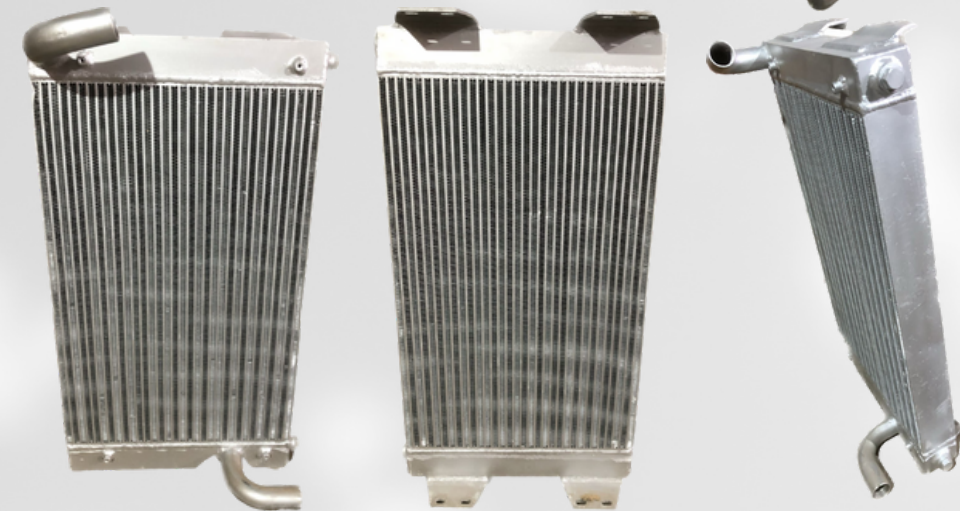
TATA EX 70

HEIGHT - 715 mm
WIDTH - 540 mm
THICKNESS - 50 mm



TATA EX 110

HEIGHT - 810 mm
WIDTH - 615 mm
THICKNESS - 55 mm



EX 200 SUPER

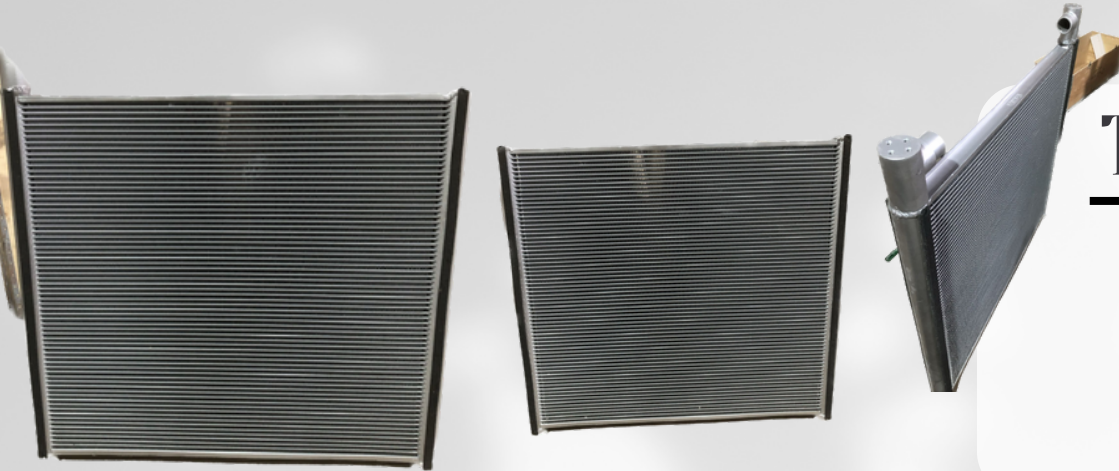
HEIGHT - 830 mm
WIDTH - 455 mm
THICKNESS - 80 mm

TATA OIL COOLERS



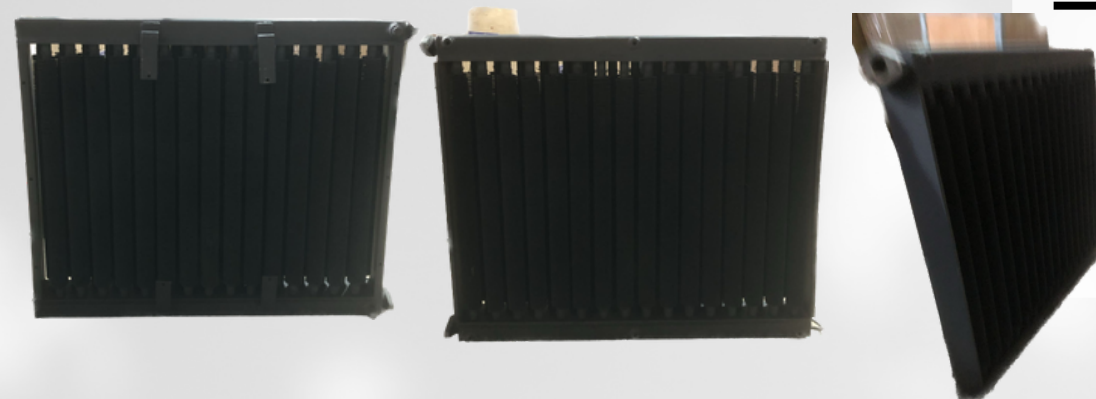
NATIONAL RADIATORS
& OIL COOLER

Pune



TATA Xaxis 210

HEIGHT - 905 mm
WIDTH - 875 mm
THICKNESS - 45 mm



HITACHI EX 210 ISUZU ENGINE

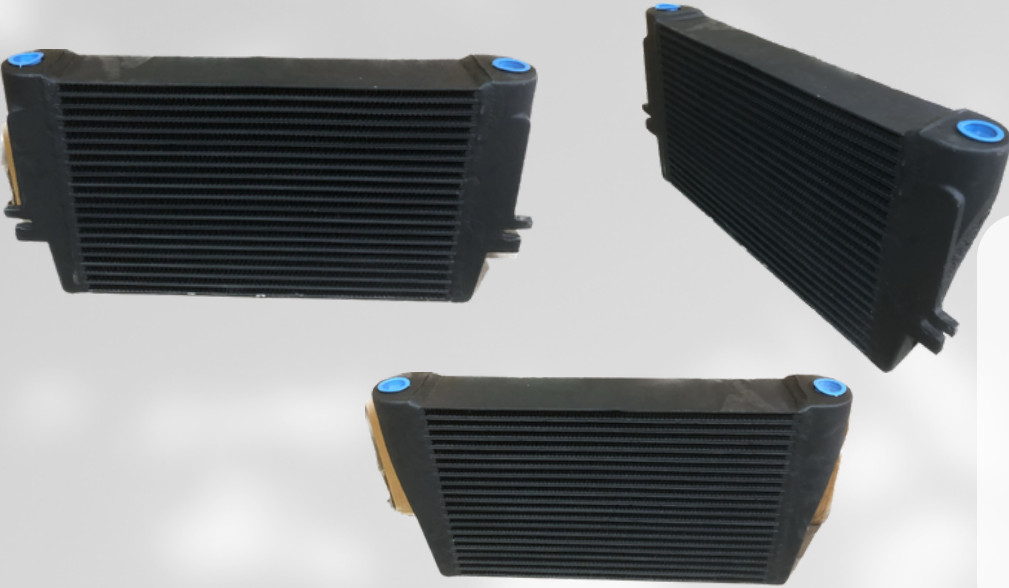
HEIGHT - 840 mm
WIDTH - 995 mm
THICKNESS - 100 mm

L&T OIL COOLERS



NATIONAL RADIATOR
& OIL COOLER

Pune

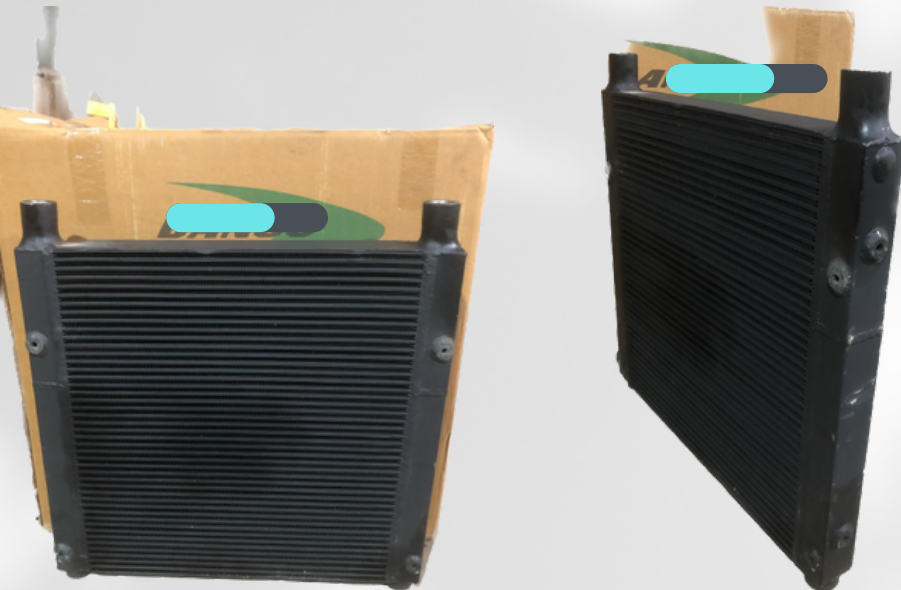


L&T 770 HYDROLIC

HEIGHT - 595 mm

WIDTH - 285 mm

THICKNESS - 87 mm



L&T 770 NEW MODEL

HEIGHT - 535 mm

WIDTH - 580 mm

THICKNESS - 60 mm

L&T OIL COOLERS



NATIONAL RADIATOR
& OIL COOLER

Pune



L&T PC 150

HEIGHT - 935 mm

WIDTH - 250 mm

THICKNESS - 90 mm



L&T PC 210

HEIGHT - 1010 mm

WIDTH - 785 mm

THICKNESS - 85 mm

JCB OIL COOLERS



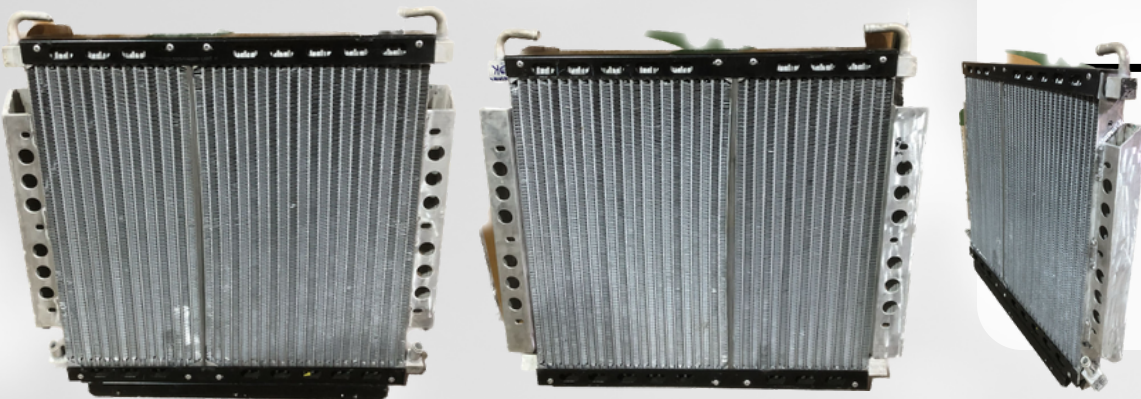
JCB 3DX 8 PIPE

HEIGHT - 557 mm
WIDTH - 635 mm
THICKNESS - 40 mm



JCB 3DX

HEIGHT - 575 mm
WIDTH - 625 mm
THICKNESS - 40 mm



JCB 4DX

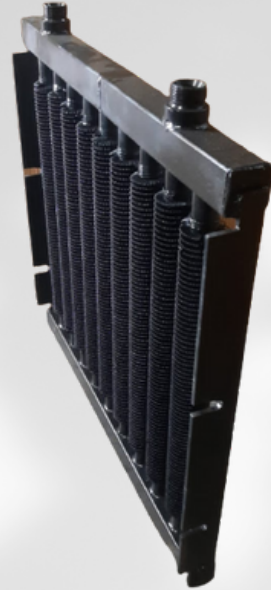
HEIGHT - 575 mm
WIDTH - 660 mm
THICKNESS - 50 mm

JCB OIL COOLERS



NATIONAL RADIATOR
& OIL COOLER

Pune

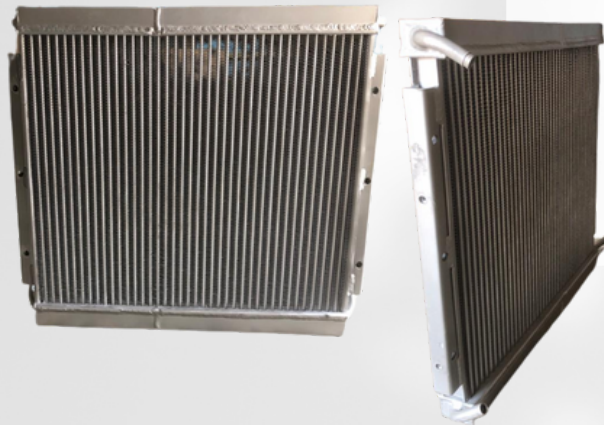


JCB 3DX 9 PIPE

HEIGHT - mm

WIDTH - mm

THICKNESS - mm



JCB 3DX CROSS PIPE

HEIGHT - 570 mm

WIDTH - 625 mm

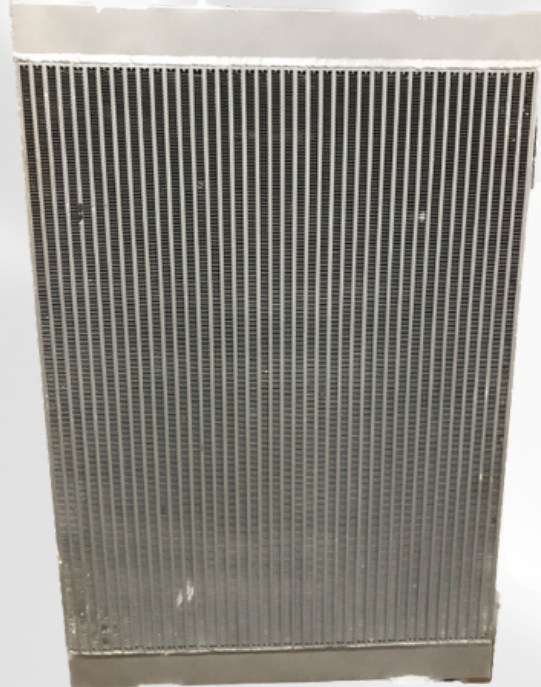
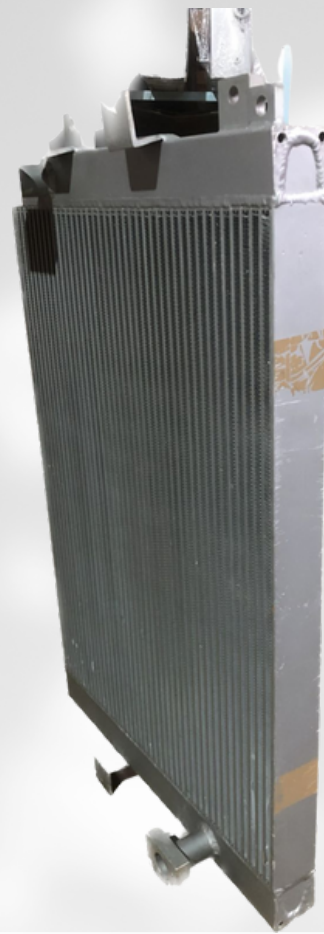
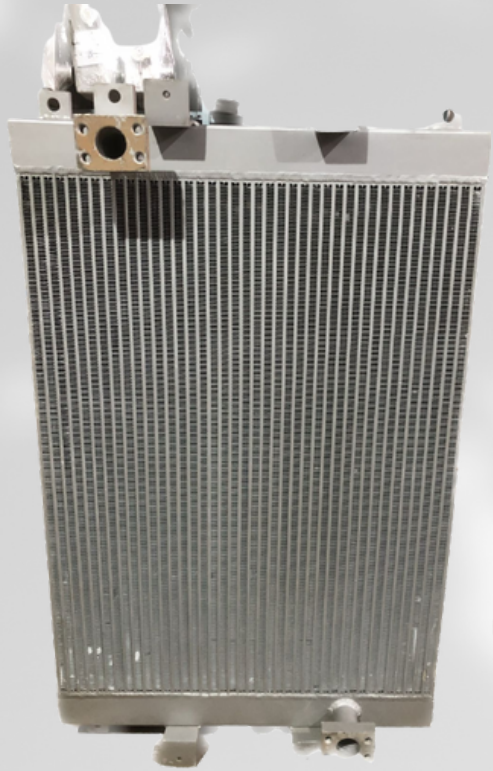
THICKNESS - 40 mm

VOLVO OIL COOLERS



NATIONAL RADIATOR
& OIL COOLER

Pune



VOLVO 210 BLC

HEIGHT - 900 mm

WIDTH - 600 mm

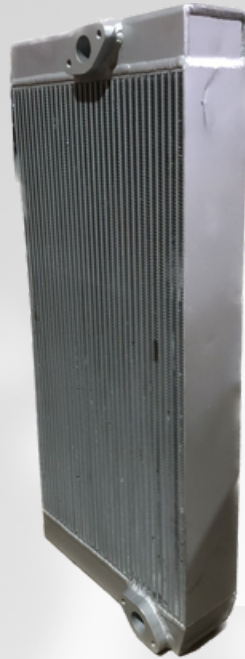
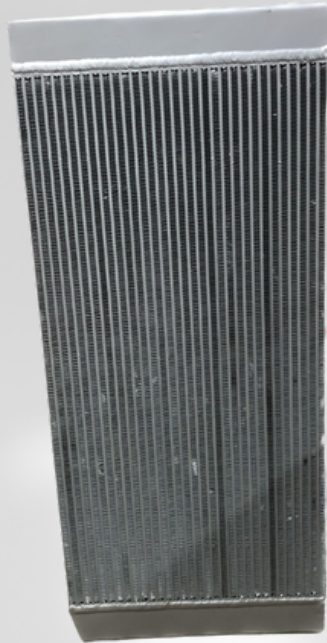
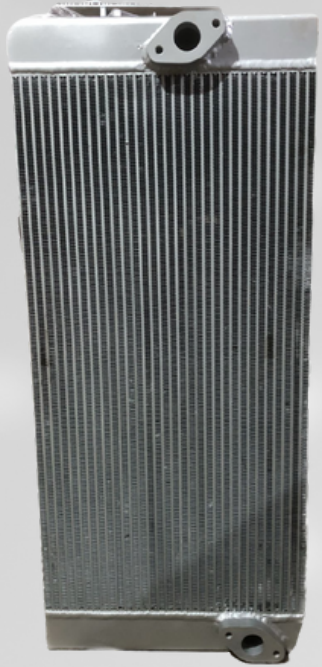
THICKNESS - 65 mm

SANY OIL COOLERS



NATIONAL RADIATOR
& OIL COOLER

Pune

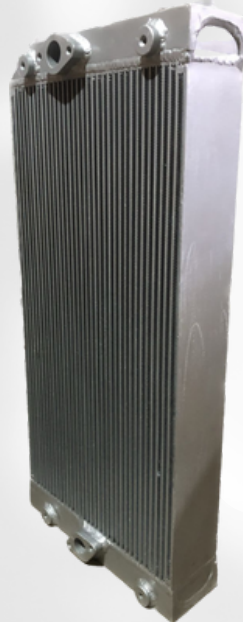
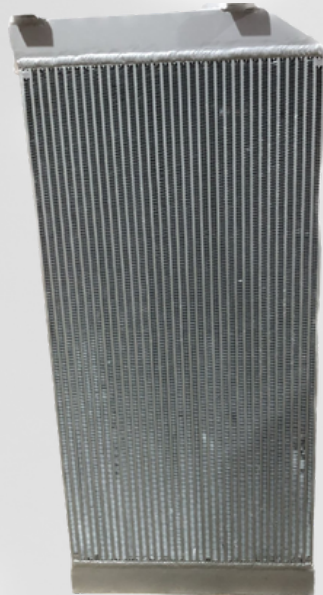
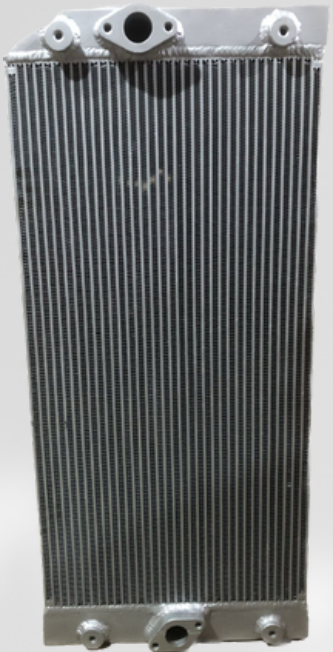


SANY 210

HEIGHT - 1010 mm

WIDTH - 440 mm

THICKNESS - 130 mm



SANY 240

HEIGHT - 1060 mm

WIDTH - 470 mm

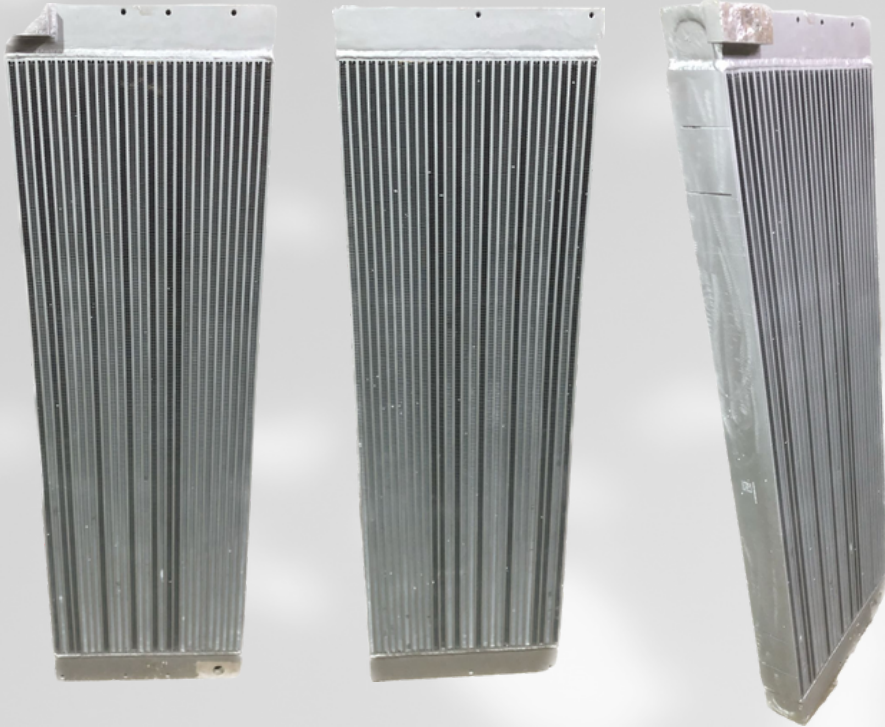
THICKNESS - 140 mm

ATLAS OIL COOLERS



NATIONAL RADIATOR
& OIL COOLER

Pune

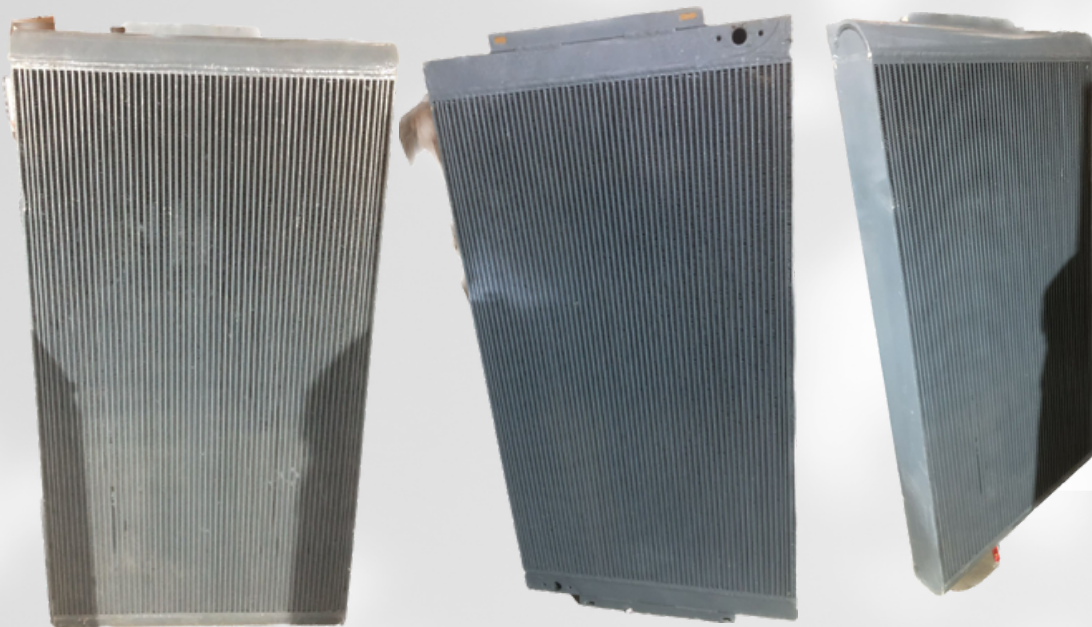


ATLAS 246

HEIGHT - 1310 mm

WIDTH - 405 mm

THICKNESS - 95 mm



ATLAS 1100/300

HEIGHT - 1575 mm

WIDTH - 790 mm

THICKNESS - 140 mm

OIL COOLERS



NATIONAL RADIATOR
& OIL COOLER

Pune

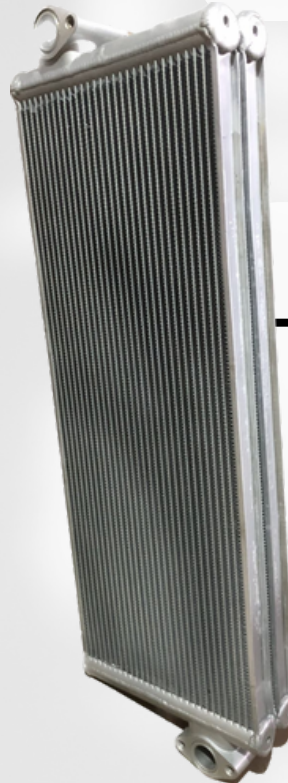
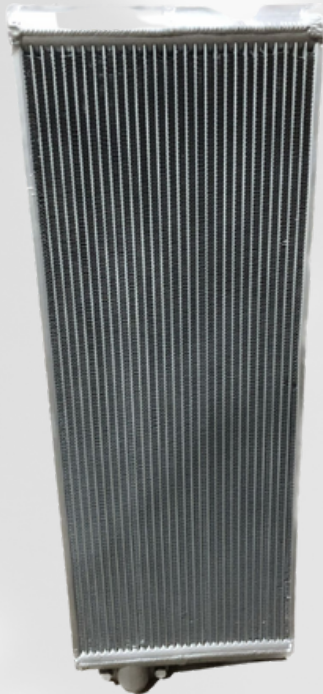


HYUNDAI 210

HEIGHT - 1010 mm

WIDTH - 750 mm

THICKNESS - 110 mm



KOBELCO 210

HEIGHT - 1050 mm

WIDTH - 335 mm

THICKNESS - 100 mm

Contact us:



NATIONAL RADIATORS
& OIL COOLER

Pune

- **Branch 1 – Swargate, Pune**

Branch manager – Arshad Shaikh 7219756035

Moin Shaikh 7083618643

- **Branch 2 – Katraj, Pune**

Branch manager – Zameer Shaikh 9158016141

Tayyab Shaikh 8446122310

- **Branch 3 – Gangadham, Pune**

Branch manager – Yusuf Shaikh 9422000957 / 9158137737

Sameer Shaikh 9011199375

- **Email id – nationalradiatorsoilcooler@gmail.com**